



# MONTHLY MEMBERSHIP PROGRESS REPORT

District 2 E1

Results as of: 04/30/2018

GMT: JOE AL PICONE

LOCATION TEXAS

GMT CA

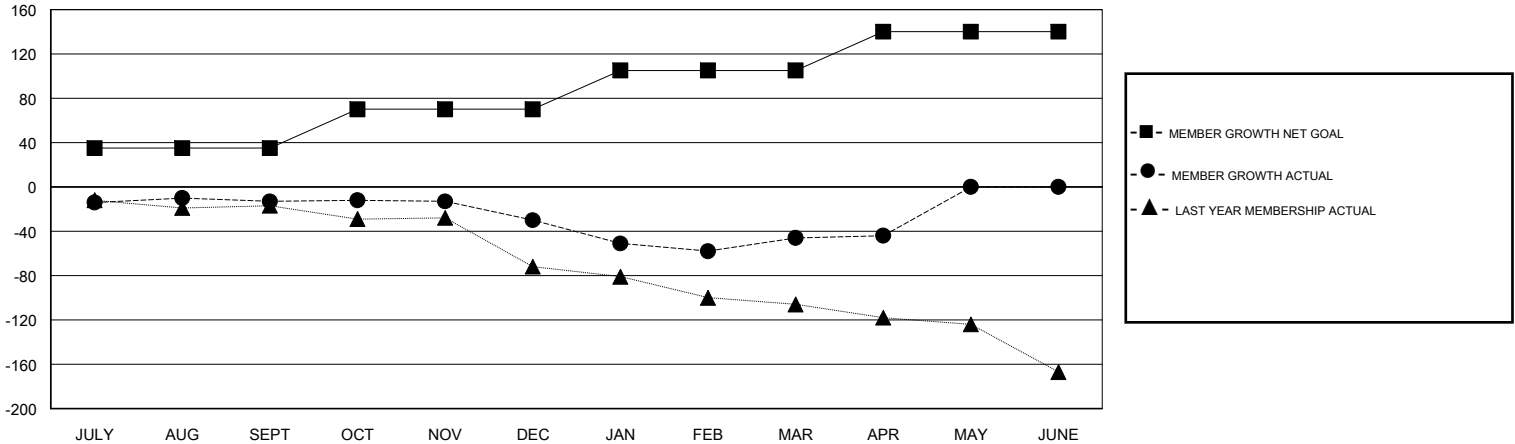
Clubs			
RESULTS FOR 2017-2018			
QUARTER	NEW CLUB GOAL	NEW CLUBS	DROPPED CLUBS
JULY/AUG/SEPT	1	0	0
OCT/NOV/DEC	1	0	2
JAN/FEB/MAR	1	0	1
APR/MAY/JUNE	1	0	0

Members			
RESULTS FOR 2017-2018			
QUARTER	MEMBER GROWTH NET GOAL	MEMBER GROWTH ACTUAL	DROPPED MEMBERS ACTUAL (including transfers)
JULY/AUG/SEPT	35	25	36
OCT/NOV/DEC	35	38	53
JAN/FEB/MAR	35	42	54
APR/MAY/JUNE	35	7	5

GOALS AND ACTUAL NEW CLUBS CUMULATIVE



GOALS AND ACTUAL MEMBERS CUMULATIVE



DROPPED CLUBS: 3

27 CLUBS OF 51 ADDED 1 OR MORE NEW MEMBERS

GENDER DISTRIBUTION

MALE 799 (73.37%)  
 FEMALE 290 (26.63%)  
 Women Percentage Fiscal Year Goal: 35%

DROPPED MEMBERS

[CLICK HERE FOR CUMULATIVE MEMBERSHIP DATA](#)

DECEASED	6
CLUB CANCELLED	16
OTHER	126
<b>TOTAL</b>	<b>148</b>

TOTAL FAMILY UNIT MEMBERS	99
FAMILY MEMBERS PAYING HALF DUES	50